



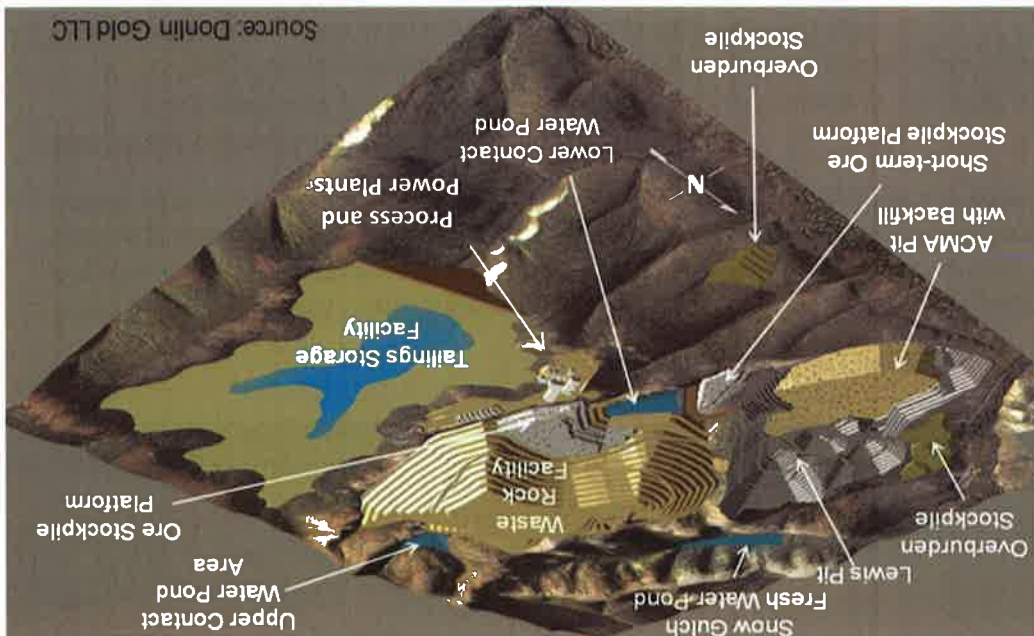
Please place first-class postage here.

from:

Kurt Kuhne  
Yoot ilitnaurviat

Keith Gordon  
Regulatory Division  
US Army Corps of Engineers  
CEPOA-RD-Gordon, PO Box 6898  
Joint Base Elmendorf Richardson, AK

99506-0898



**Layout of Proposed Mine Site**

The image to the right illustrates the eventual layout of a proposed gold mine, ten miles north of the community of Crooked Creek on the Kuskokwim River in southwestern Alaska, for which the US Army Corps of Engineers is preparing an EIS. The project, proposed by Donlin Gold, LLC, includes a natural gas pipeline and transportation and components. You may use this mail-in form to submit comments.

For more information, please visit: [www.DonlinGoldEIS.com](http://www.DonlinGoldEIS.com)

(fold here)



Lined area for writing comments.

*[Handwritten mark]*

- Comments and questions about the accuracy of information in the Draft EIS.
- Comments and questions about the adequacy of methods or assumptions used.
- New information to be considered in preparing the Final EIS.
- New reasonable alternatives or revisions to current alternatives.
- Additional measures to reduce impacts (mitigation).

Important topics for comments would include:

The Corps welcomes your comments on the Draft Environmental Impact Statement. If you'd like to mail your comments, please feel free to use this form. Write your comments below then fold this page in thirds so the mailing address shows. Additional pages can be inserted. Remember to affix first class postage. You can also email your comments to [POA.donlingold@usace.army.mil](mailto:POA.donlingold@usace.army.mil), or fax them to (907) 753-5567.

### Comment Form

