



US Army Corps of Engineers
Donlin Gold Project EIS

Shari Steth 2/1/16

Comment Form

The Corps welcomes your comments on the Draft Environmental Impact Statement. If you'd like to mail your comments, please feel free to use this form. Write your comments below then fold this page in thirds so the mailing address shows. Additional pages can be inserted. Remember to affix first class postage. You can also email your comments to POA.donlingoldeis@usace.army.mil, or fax them to (907) 753-5567.

Important topics for comments would include:

- Comments and questions about the accuracy of information in the Draft EIS.
- Comments and questions about the adequacy of methods or assumptions used.
- New information to be considered in preparing the Final EIS.
- New reasonable alternatives or revisions to current alternatives.
- Additional measures to reduce impacts (mitigation).

→ Wait until ^{a less} environmentally impactful technology is developed for gold extraction

→ Concerned about the amount of natural gas consumption and the impact of potentially decreased amounts of natural gas available for people and ↑ cost of natural gas due to ↓ supply

→ Instead of LNG pipeline for energy, what about natural gas being converted and sent from the North Slope as electrical current transmitted by power lines instead?

→ Concerned about potential leaks/breakages of the 315 mile LNG pipeline / diesel fuel

→ Concerned about diesel fuel spills in/along the Kuskokwim if each tug pushes 4 barges of fuel!

→ Who takes care of the mess when retaining walls fail after the 65-year liability limit? (mind closure) 60 yrs.

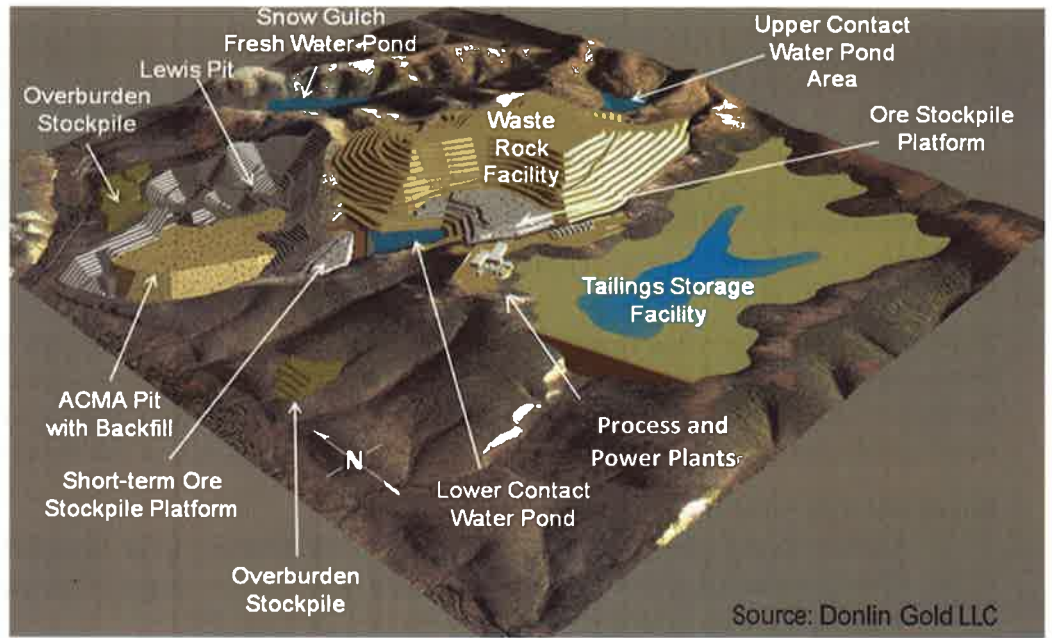
→ Decreased water levels due to ↓ snowfall would ↑ impact on salmon from numerous barge trips



Layout of Proposed Mine Site

The image to the right illustrates the eventual layout of a proposed gold mine, ten miles north of the community of Crooked Creek on the Kuskokwim River in southwestern Alaska, for which the US Army Corps of Engineers is preparing an EIS. The project, proposed by Donlin Gold, LLC, includes a natural gas pipeline and transportation and components. You may use this mail-in form to submit comments.

For more information, please visit:
www.DonlinGoldEIS.com



↳(fold here)



(To mail, fold below blue line. Photo: Dave Cannon)

Keith Gordon
 Regulatory Division
 US Army Corps of Engineers
 CEP/A-RD-Gordon, PO Box 6898
 Joint Base Elmendorf Richardson, AK
 99506-0898

Please place
 first-class
 postage here.



from: